



Terror:	3×8
Power:	6×7
Speed:	2×8
Rargh Factor:	9×5



Terror:	11×7
Power:	8×3
Speed:	3×3
Rargh Factor:	5×7



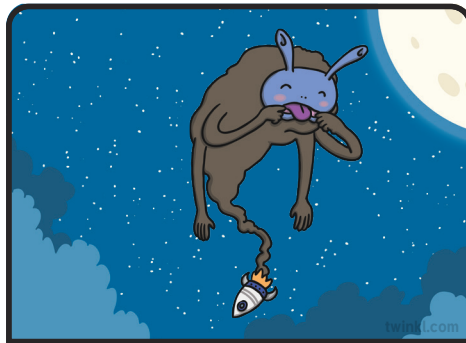
Terror:	6×10
Power:	3×8
Speed:	4×12
Rargh Factor:	8×9



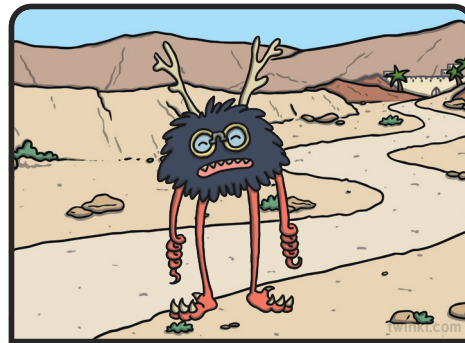
Terror:	4×5
Power:	11×4
Speed:	4×9
Rargh Factor:	7×8



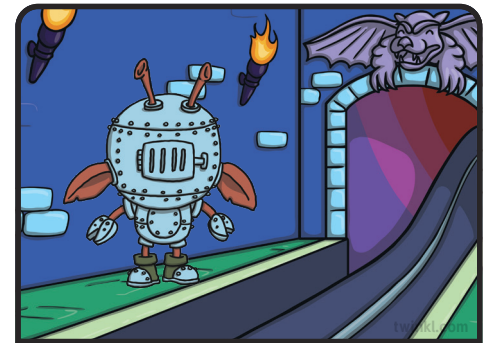
Terror:	7×4
Power:	2×12
Speed:	8×8
Rargh Factor:	3×5



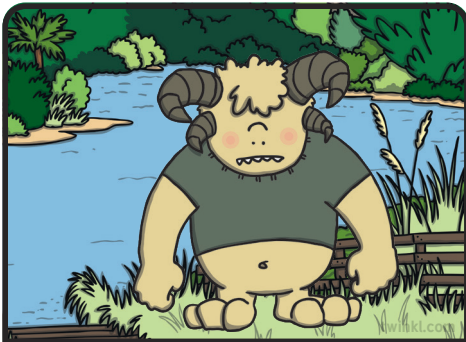
Terror:	6×3
Power:	5×9
Speed:	2×2
Rargh Factor:	8×9



Terror:	10×10
Power:	5×9
Speed:	12×12
Rargh Factor:	4×7



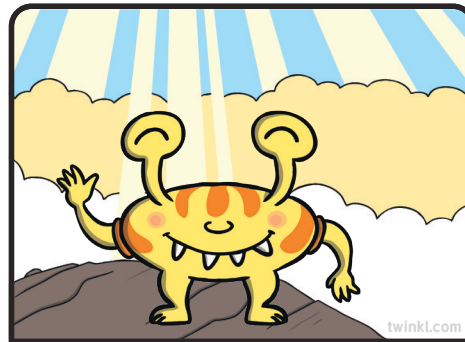
Terror:	3×6
Power:	8×12
Speed:	3×9
Rargh Factor:	7×9



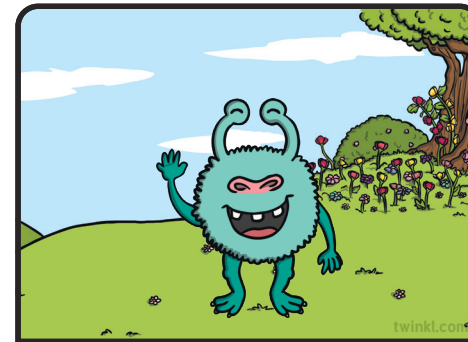
Terror:	6×6
Power:	9×9
Speed:	4×4
Rargh Factor:	8×8



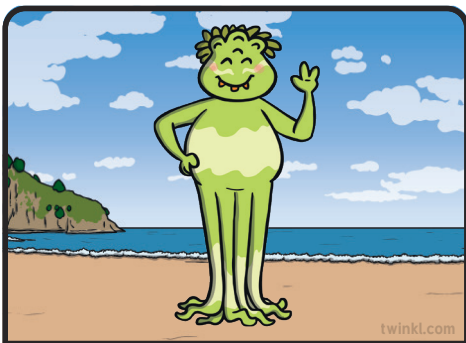
Terror:	3×7
Power:	8×4
Speed:	11×1
Rargh Factor:	12×9



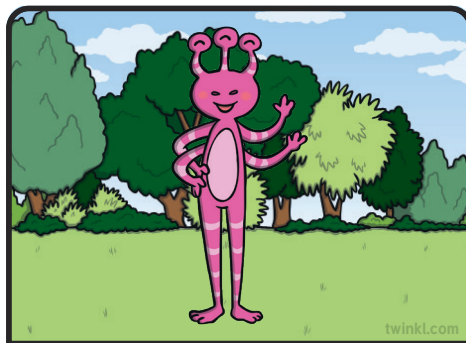
Terror:	8×3
Power:	4×5
Speed:	6×6
Rargh Factor:	12×2



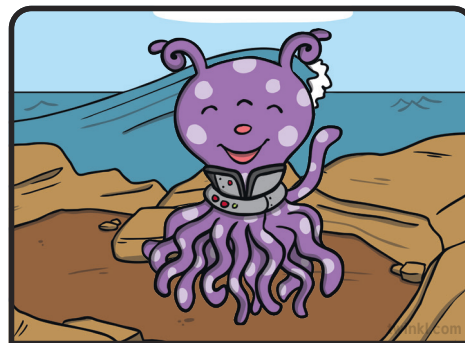
Terror:	7×6
Power:	6×12
Speed:	9×4
Rargh Factor:	4×8



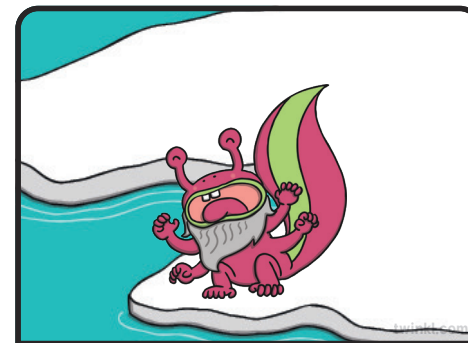
Terror:	10×4
Power:	8×8
Speed:	5×3
Rargh Factor:	6×9



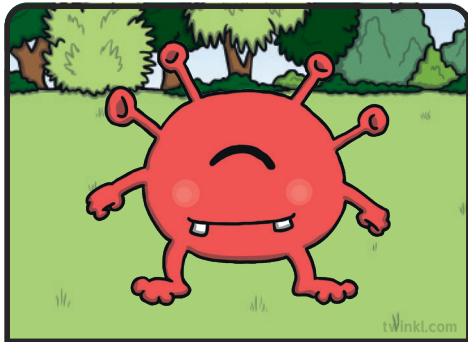
Terror:	11×7
Power:	7×8
Speed:	3×3
Rargh Factor:	5×5



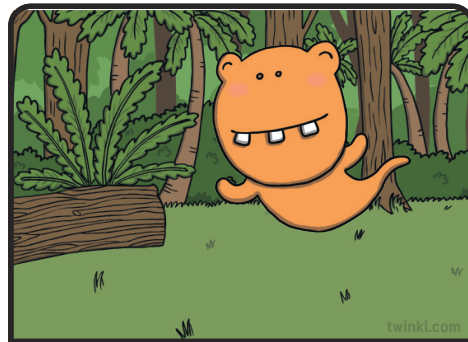
Terror:	2×12
Power:	7×7
Speed:	4×9
Rargh Factor:	6×9



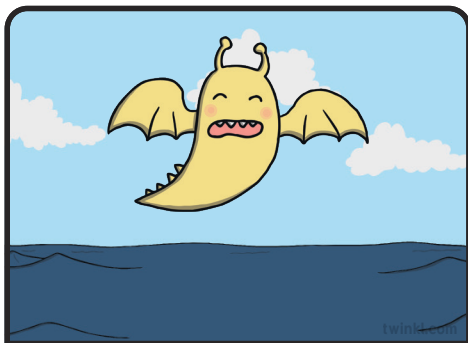
Terror:	3×11
Power:	8×3
Speed:	12×4
Rargh Factor:	6×4



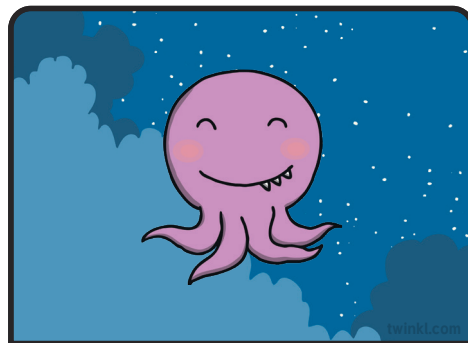
Terror:	6×6
Power:	7×5
Speed:	9×9
Rargh Factor:	6×2



Terror:	5×3
Power:	7×9
Speed:	7×7
Rargh Factor:	2×12



Terror:	9×10
Power:	7×9
Speed:	4×5
Rargh Factor:	1×4



Terror:	6×7
Power:	4×2
Speed:	12×3
Rargh Factor:	11×4

Monster Multiplication Card Game Instructions

How to play:

- To start the game, make sure you have shuffled the cards well. After you have shuffled them, deal all of the cards face down to each player. Each player then holds their cards so that they can only see the top one.
- The player to the dealers left starts by reading out a category from the top card, (e.g. Strength, value 6).
- The other players then read out the same category from their top card. The person with the highest value wins and collects every other player's top cards (including their own) and places them at the bottom of their pile.
- The person who won then takes another turn and chooses another category from the top card and the cycle continues. This continues until someone has a higher value on that particular category to which they will then take over and begin to choose the categories.
- If two or more cards share the same value on one particular category, then all the cards are placed in the middle of the table and the same player chooses again from the next card on their pile. Whoever wins this round collects all the other players cards and also the cards from the centre of the table.
- The person with all the cards at the end is the winner!